



# SKYURINAL

## BY CALLAHEAD

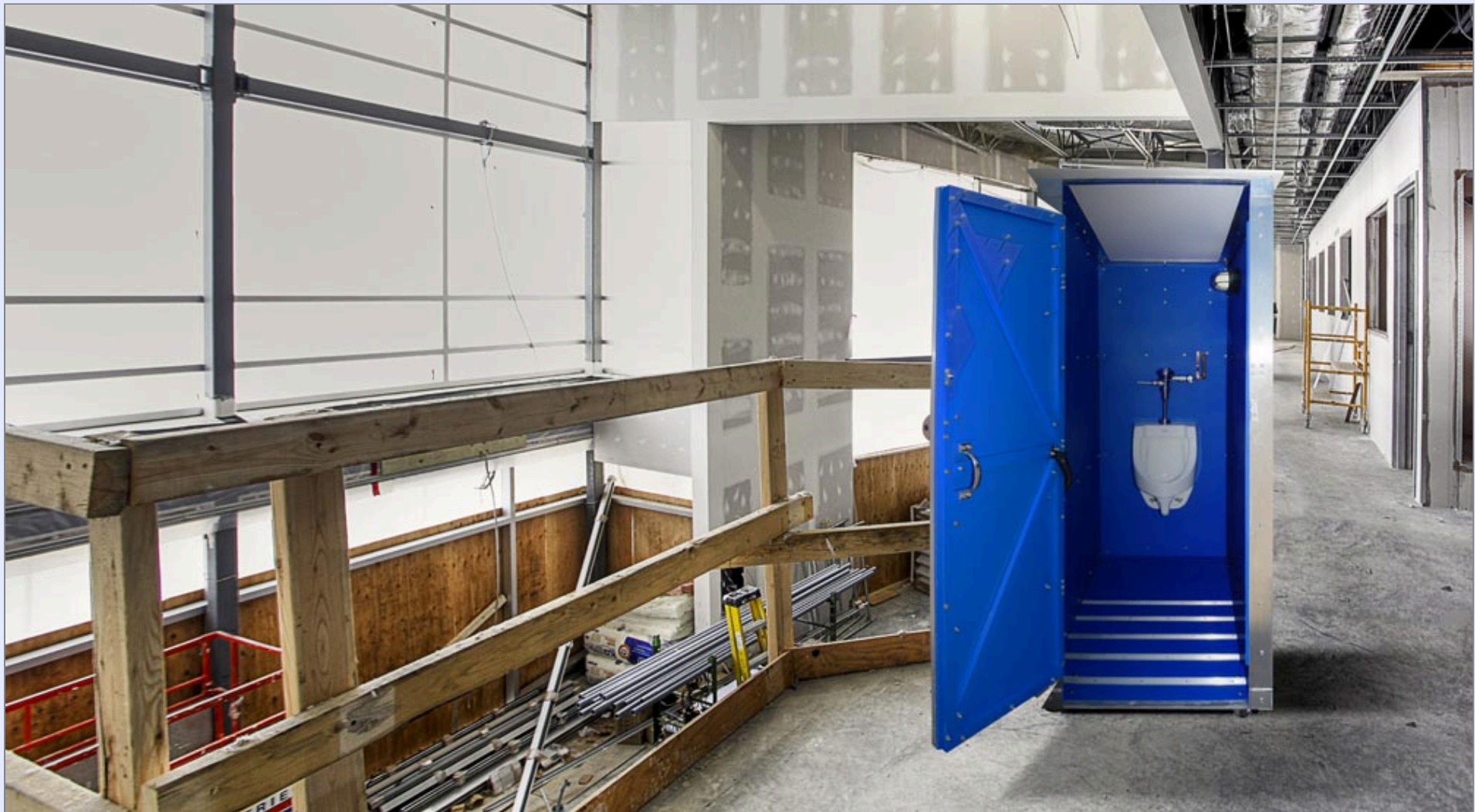
CALLAHEAD's **SKYURINAL RESTROOM** was invented and designed by Charles W. Howard, the CEO of CALLAHEAD. Mr. Howard is also a builder and designer with countless innovations for CALLAHEAD. The **SKYURINAL** is specifically engineered for commercial environments with an established sewer, cesspool, or holding tank. The **SKYURINAL** is a commercial porcelain flush urinal designed to resemble and function like those in public restrooms. It can be installed in various commercial locations, including skyscrapers, high-rise buildings, ships, piers, barges, warehouses, parks, power plants, industrial facilities, and sewer plants, provided there is access to domestic water or tank water. CALLAHEAD's **SKYURINAL** is frequently utilized to accompany work crews in high-rise buildings and skyscrapers, allowing for effortless relocation between floors.

The **SKYURINAL RESTROOM** features a streamlined design and is equipped with wheels, facilitating easy movement through elevators, hallways, gates, and alleys. The diecast wheels ensure secure locking for enhanced safety. Additionally, a lifting hoist can attach the **SKYURINAL RESTROOM** to a crane or similar equipment, facilitating transportation in various directions, including up, down, and across to a barge, ship, or other required locations. The restroom is entirely constructed with commercial marine-grade plastic, stainless steel, and aluminum, designed to endure the most challenging job-site conditions and weather environments.

CALLAHEAD's **SKYURINAL RESTROOM** is a unique product, exclusively designed, manufactured, and available through CALLAHEAD. It is offered in ten color choices: Blue, Green, Orange, Brown, Yellow, Black, Indigo, Arctic White, Dolphin Gray, and Red, allowing it to blend seamlessly with the jobsite's location. The **SKYURINAL** is a private restroom designed for commercial locations with available water and sewer hookups on-site. The **SKYURINAL RESTROOM** is constructed using commercial-grade marine plastic, stainless steel, and aluminum, ensuring there will be no rust or corrosion and creating an environment resistant to mold and algae growth. The exterior framing of aluminum cladding presents a visually appealing appearance. The exterior cladding of the **SKYURINAL** is designed to naturally counteract wind forces, thereby preventing the unit from toppling. Additionally, the roof is constructed from marine-grade plastic and features a substantial pitch to effectively prevent any rainwater leakage.



The **SKYURINAL** features a spring-loaded door designed to remain closed at all times. The door is equipped with both interior and exterior handles, as well as an interior lock for privacy. To prevent unauthorized use, a padlock provided by CALLAHEAD can be used to secure the unit. The door is shortened by 4 inches at both the top and bottom to enhance ventilation. The exterior of the door displays stainless pressed CALLAHEAD signage, signifying the highest standards in restroom facilities.



The **SKYURINAL** is a porcelain, low-flush, wall-mounted urinal with a hand lever flush. It is connected to a commercial flushometer that uses a .125 gallon flush water volume. Hand sanitizer can be wall-mounted upon request. The smooth interior walls are designed without framing to facilitate easy mobility within the unit. The floors are equipped with aluminum grip plates to prevent slipping and sliding. Additionally, an LED bulkhead light with a specification of 6.2W and 500K is installed inside, providing ample illumination. This light requires a standard 110-Volt outdoor extension cord, which can be connected to the side of the unit.

The **SKYURINAL** was designed for locations with existing sewers, cesspools, holding tanks, and water on-site. With a rear exit urinal system, a black steel PVC or hose can be hooked up for discharge. In the rear exterior of the unit there is a 3-inch discharge for easy waste connection hook-up to connect to a sewer, cesspool or holding tank. A heavy-duty garden hose can be connected to the **SKYURINAL'S** external ¾" hose



bib connection to supply fresh water to urinal. The wheels are 3-inch lockable with a 360-degree pivot in the front and 3-inch fixed in the rear. The wheels are semi-recessed to prevent damage. Once the **SKYURINAL RESTROOM** is rolled to its destination the wheels can be locked to keep the unit in place for safety.

The **SKYURINAL RESTROOM** can be moved to the desired location using equipment such as cranes, boom trucks, bulldozers, forklifts, or similar machinery. The **SKYURINAL**'S exterior aluminum clad framing allows for easy lifting with chains, straps, or cables. It can be placed on the top floor of a building or across water on a ship, making it versatile in various settings. CALLAHEAD'S **SKYURINAL** offers an efficient solution for crews working on multiple floors by providing a private porcelain flush urinal accessible on any floor. This reduces work time lost due to trips to distant restrooms, thereby improving productivity and revenue. The **SKYURINAL** can be attached to a crane for easy lifting to convenient locations for employees, and its 31" width enables smooth passage through doorways, elevators, alleys, and hallways.

The **SKYURINAL** offers same day or next day delivery across New York City's five boroughs and throughout Westchester, Nassau, and Suffolk Counties on Long Island up to Montauk Point.

The **SKYURINAL**, designed by Charles W. Howard and produced by CALLAHEAD, represents a pioneering development in private porcelain urinals intended for commercial environments. The **SKYURINAL** offers comfortable and sanitary facilities specifically tailored for high-rise building construction sites or commercial locations equipped with water, sewer, cesspool, or holding tank systems. Construction crews will greatly benefit from having access to a private restroom featuring a porcelain urinal that functions similarly to those found in public restrooms.



**THE SKYURINAL RESTROOM OPTIONAL ACCESSORIES TO RENT:**

For added convenience, we are proud to offer the below list of optional accessory items for your **SKYURINAL RESTROOM** rental. All CALLAHEAD's rental accessories were selected to provide the same comforts and hygienic protection as using an indoor restroom. CALLAHEAD'S restroom accessory items are unmatched in the portable restroom industry and include:

- [Antiseptic Dispenser](#) Antiseptic Dispenser can be installed inside the **SKYURINAL RESTROOM** filled with our waterless hand sanitizer. Our waterless hand sanitizer kills 99.9% of germs and bacteria and meets OSHA and Health Department requirements. The antiseptic dispenser is perfect for sanitary protection before and after using the restroom. The antiseptic dispenser supplies approximately 900 – 1300 applications and is 100% maintained and refilled when needed by CALLAHEAD with its rental.

- **GoJo Hand Cleaning Dispenser** installed inside the **SKYURINAL RESTROOM** and filled with the #1 heavy duty GoJo hand cleaner. GoJo hand cleaner is popular among auto mechanics for its ability to quickly break down grease and grime. GoJo Hand Cleaner has become popular with construction workers and contractors to remove acids, cement and other solvents from hands. 100% maintained and refilled when needed by CALLAHEAD with its rental.

CALLAHEAD has been a globally recognized leader in portable sanitation since 1976, under the leadership of Charles W. Howard. CALLAHEAD is a New York-based company servicing exclusively the New York area. Our expertise in the industry ensures unparalleled service quality, with innovative products that are designed and manufactured by CALLAHEAD and are not available elsewhere. When you want the best CALLAHEAD.

### THE SKYURINAL'S DESIGN SPECIFICATIONS & FEATURES:

- Construction: commercial marine grade plastic with stainless steel fasteners and aluminum welded framework.
- Color Options Available: Blue, Green, Orange, Brown, Yellow, Black, Indigo, Arctic White, Dolphin Gray, and Red
- Height: 83"
- Width: 31"
- Depth: 48"
- Interior Dimensions: 47" D X 28" W X 78" H
- Door Opening: 22" W X 78" H
- The door has stainless steel door pulls on the interior and exterior, stainless steel barrel bolt latch interior lock, and automatic spring door close.
- Door's exterior has two stainless steel padlock hasps to lock on the outside.
- Four diecast wheels: Front two wheels are 3" lockable with a 360-degree pivot and back two wheels are 3" fixed.
- Flooring: Aluminum framed starboard with four 1 ½" aluminum non-slip strips
- Porcelain Urinal: Rear exit floor and wall mounted
- Single lever low flush porcelain urinal with .125 flushometer
- 3" rubber coping for easy connection of a PVC or hose for discharge
- External ¾" hose bib connection with hinged cover for water hook-up with heavy-duty garden hose
- Lighting: 6.2-Watt 500K LED bulkhead light connects to an outdoor standard 110-Volt weather resistant extension cord via the AC port on the side of the unit.
- Stainless pressed CALLAHEAD specialty designed signage
- Generous roof pitch to remove water as fast as possible to prevent roof leaks

### RECOMMENDED USES:

- Construction locations with running water and a sewer, cesspool, or holding tank
- Skyscraper construction and renovations (with or without elevators)
- Building construction and renovations (with or without elevators)
- Barges, ships, and piers
- Industrial plants
- ConEd plants
- Electrical plants
- Power plants
- Manufacturing plants
- Sewer plants
- Sewer construction
- Office building bathroom renovations
- Restaurants, bars, nightclubs or other commercial bathroom renovation
- High-rise building and skyscraper contracting job sites
- Any location with narrow doorways or gates
- Any location with narrow alleys

For more information about the **SKYURINAL RESTROOM** or any of CALLAHEAD's state-of-the-art equipment, including our very own [inventions](#), as well as the following:

CALLAHEAD's portable water and sewer system, high-rise portable toilets, luxury and short-term restroom trailers, special event portable toilets, standard port a pottys, portable handwashing sinks, porcelain toilet systems for office trailers, [security guard booths](#), ticket booths, holding tanks, fresh water delivery, commercial portable sinks, antibacterial and hand sanitizing stations, long-term and short-term portable toilet rentals, long-term and short-term restroom trailer rentals, portable shower rentals, and portable storage shed rentals...

Please contact one of our expert sales specialists at [800-634-2085](tel:800-634-2085) or visit our [website](#) for full photos, details and [videos](#) of our equipment.



THE **SKYURINAL RESTROOM** ~ BY CALLAHEAD ~ **1.800.634.2085**



"To Develop and Evolve a Human Necessity"  
- Charles W. Howard, President & C.E.O.

#### Contact us

304 Cross Bay Blvd,  
Broad Channel, NY 11693

Email: [info@callahead.com](mailto:info@callahead.com)

Toll-free: [800.634.2085](tel:800.634.2085)

Fax: (800)634-8127

#### Hours

Monday to Friday: 7am - 7pm

Saturdays: 9am - 5pm

Sundays: Closed

Web Development by [CALLAHEAD](http://callahead.com) - "A Progressive Work of Art"  
© 2025 Callahead Corp. All Rights Reserved.